



ENTER IF YOU DARE

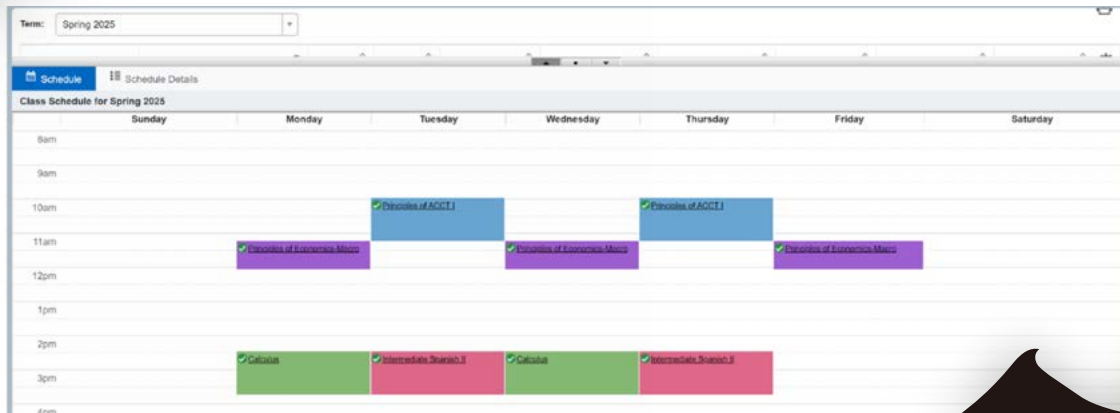
SPRING REGISTRATION

Prior to registration, make sure that you...

- Consulted your advisor and have a plan for registration
- Accounted for your transfer credits
- Allocated travel time between classes

ROOM 1

UNDERSTANDING YOUR CLASS SCHEDULE



MEETING DATES & TIMES

In the example shown above, each highlighted day is the day you will attend your class in person! You can find the meeting times and location under "Instructor & Meeting Times."

The screenshot shows a class details window for "Algebra with Workshop Mathematics 1101 131". The window is titled "Algebra with Workshop Mathematics 1101 131". It contains two sections for instructor information:

Instructor: Jennifer Reed (Primary)

S M T W T F S 08:30 AM - 09:45 AM
08/19/2024 - 12/12/2024 Main Campus or Dubois
Type: Class Campus Campus | Fretwell |
Room 121
Instructor information: [Jennifer Reed](#)

Instructor: Jennifer Reed (Primary)

S M T W T F S 04:00 PM - 05:15 PM
08/19/2024 - 12/12/2024 Main Campus or Dubois
Type: Class Campus Campus | Friday |
Room 116
Instructor information: [Jennifer Reed](#)

Close

LECTURES & LABS

If you see two calendar weeks with different days highlighted, that means some are labs and some are lectures. Although there are two weeks shown, you'll attend all of those sessions each week. In this example, the student will attend a lab on Mondays at 10 a.m. and lectures on Mondays and Wednesdays at 12 p.m.

WHICH CLASSES ARE RIGHT FOR YOU?

Bookstore Links	Catalog Prerequisites								
Course Description	And/Or	Test	Score	Subject	Course Number	Level	Grade		
Attribute Type	And			Accounting	2121	Undergraduate	C		
Restrictions				Management Information Systems	2130	Undergraduate	C		
Instructor/Meeting Times									
Enrollment/Waitlist									
Corequisites									
Prerequisites									

PREREQUISITES

Some courses require prerequisites. That means in order to register for the course, there's a prior course you must complete to prepare you for the next course. Some colleges and majors require you to earn specific grades in prerequisite courses. To view a list of prerequisites for a course, visit the "prerequisite" tab (shown above).

COURSE ABBREVIATIONS

Each course has a four-letter abbreviation based off of the major it's associated with. Typically, these letters are the first four letters of the associated major (ie. COMM = Communications Studies).

LOCKED COURSES

Some courses are reserved for students in specific colleges or majors and therefore may be locked for other students. Because these courses are required for some students, they are prioritized in the registration process. If you're interested in taking a class that's outside of your major, consult your advisor.

SHOULD YOU STAY OR SHOULD YOU GO?

GETTING ON THE WAITLIST

If there is a course you'd like to register for that is full, you are able to place yourself on the waitlist. The waitlist reserves a spot for you in the course if any students drop the course, making another spot available. The amount of available waitlist spots vary per course. If a seat in the course becomes available while you're on the waitlist, you will be placed in that course.

ADD/DROP PERIOD & WITHDRAWALS

The first 10 days of each semester are referred to as the "Add/Drop Period." During Add/Drop, you can add and drop courses from your schedule without it impacting your transcript or GPA. If you need to drop a class after the Add/Drop Period, it's considered a withdrawal and will appear on your transcript. Students can withdraw from up to 16 credits during their time at Charlotte. The deadline to withdraw from Spring 2026 classes is Mar. 16, 2026. After this deadline, withdrawals are only available for students with extenuating circumstances.

MORE RESOURCES

SCAN OR CLICK
TO ACCESS



"HOW DO I?" VIDEO SERIES

Follow along with Peer Hub as they walk through important topics such as navigating Student Self Service, finding classes, dropping, withdrawing, and waitlisting, viewing holds and more.



SPRING 2026 ACADEMIC CALENDAR

View a full list of important registration and payment deadlines, including the Add/Drop Period, last date to withdraw and more. We recommend bookmarking this page for future reference!